

i_SCALE

www.holbright.com

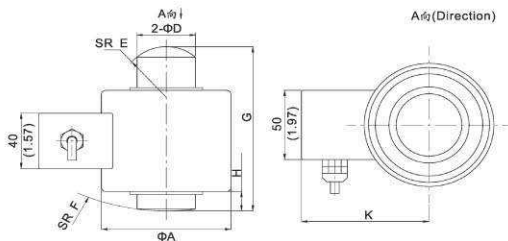
HB-DCP SERIES



技術指標 Specifications

精度等級 Accuracy Class According To OIML R60	OIML R60	C3	量程 Capacities	t	0.5, 1, 2, 3, 5, 10, 20, 25, 30, 40, 50
最大檢定分度數 n max	n max	3000	額定輸出 Rated Output	Counts	800,000/2mV/V 1,200,000/3mV/V
最小檢定分度值 Vmin	Vmin	E _{max} /7500	測量速率 Measuring Rate	Hz	256
綜合誤差 Combined Error	%F.S	≅ ± 0.020	輸出速率 Output Rate	Hz	64
蠕變 Creep Error	%F.S/30min	≅ ± 0.016	通訊介面 Asynchronies Interface		CAN Bus
溫度對輸出靈敏度的影響 Temperature Effect On Sensitivity	%F.S/10ϕ	≅ ± 0.011	通訊串列傳輸速率 Communication Baud Rate	Bps	50K, 125K, 250K
溫度對零點輸出的影響 Temperature Effect On Zero Output	%F.S/10ϕ	≅ ± 0.019	最大通訊距離 Maximum Communication Distance	m	50K/750m, 125K/250m, 250K/100m
補償溫度範圍 Compensation Temperature Range	°C	-10~+40	防護等級 Protection Class		IP68
使用溫度範圍 Operating Temperature Range	°C	-30~+80	安全過載範圍 Safe Load Limit	%F.S	150
極限過載範圍 Ultimate Load	%F.S	300	電纜線長度 Length Of Cable	m	15/10~50t 5/0.5~5t

外型尺寸 Outline Dimension in mm(inch)



尺寸mm 量程(t)	ΦA	ΦD	E	F	G	H	K
0.5-5t	88.9(3.50)	40(1.57)	25(0.98)	150(5.90)	118.5(4.67)	19(0.75)	87.5(3.44)
10-30t	88.9(3.50)	40(1.57)	37.5(1.48)	150(5.90)	118.5(4.67)	14(0.55)	87.5(3.44)
40-50t	88.9(3.50)	50(1.97)	200(7.87)	200(7.87)	118.5(4.67)	14(0.55)	87.5(3.44)
100t	120(4.72)	76(3.00)	50(1.97)	300(11.81)	150(5.90)	24(0.94)	102(4.02)

接線方式 Connections

紅(Red)V+
 黑(Black)V-
 白(White)CANL+
 藍(Blue)CANL-
 黃(Yellow)CANH+
 棕(Brown)CANH-
 透明(Transparent)Shield